

# Depth to water maps completed and available, way forward

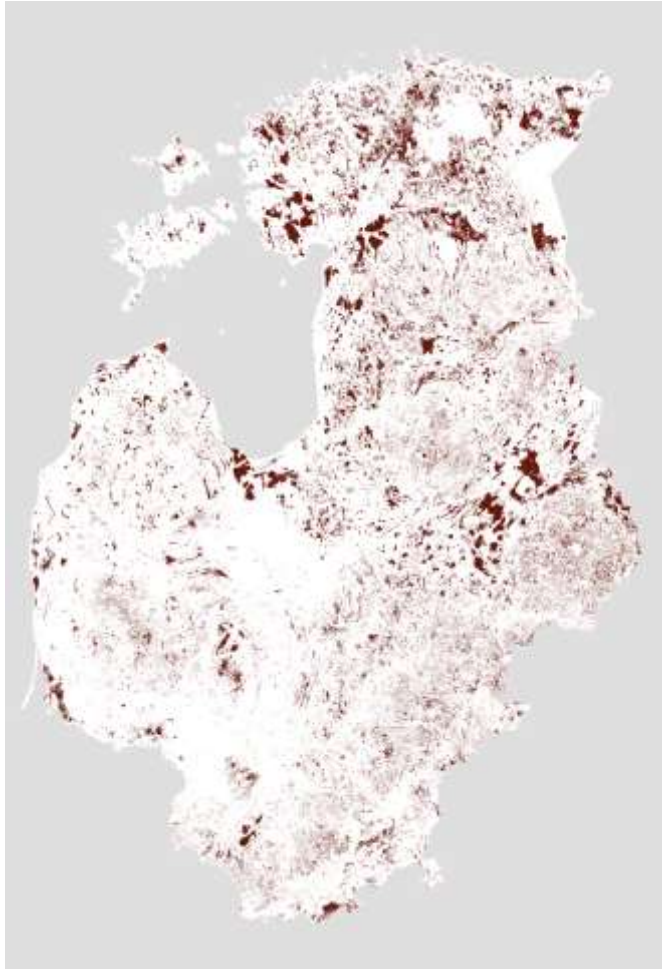
29/06/2021

4th Steering group meeting  
MS Teams meeting

LIFE OrgBalt, LIFE18 CCM/LV/001158

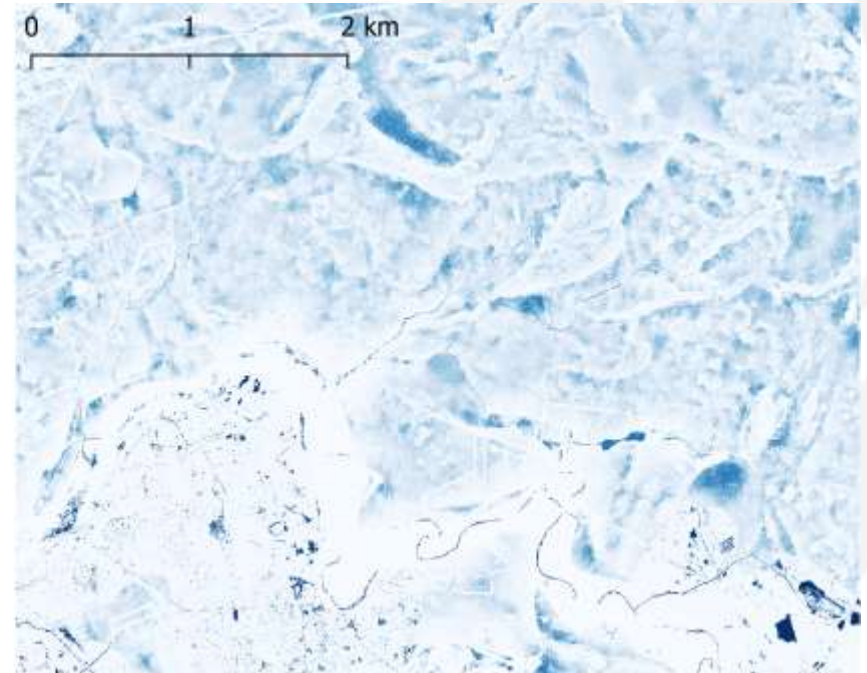
EU LIFE Programme project  
“Demonstration of climate change mitigation potential of nutrients rich organic soils in Baltic States and Finland”

## Organic soil data

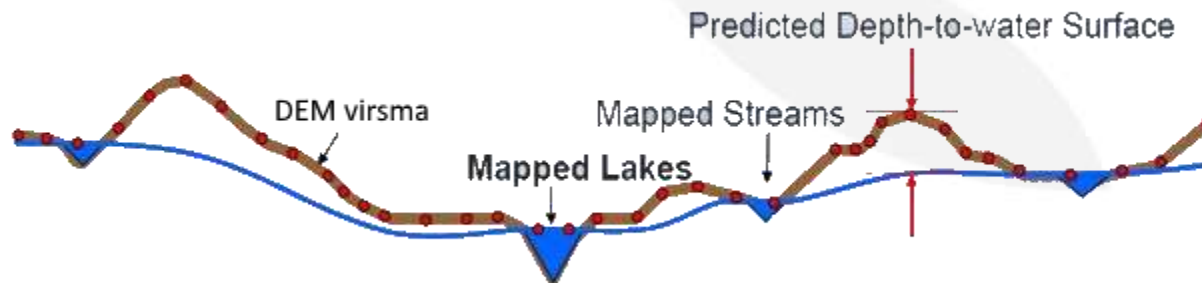
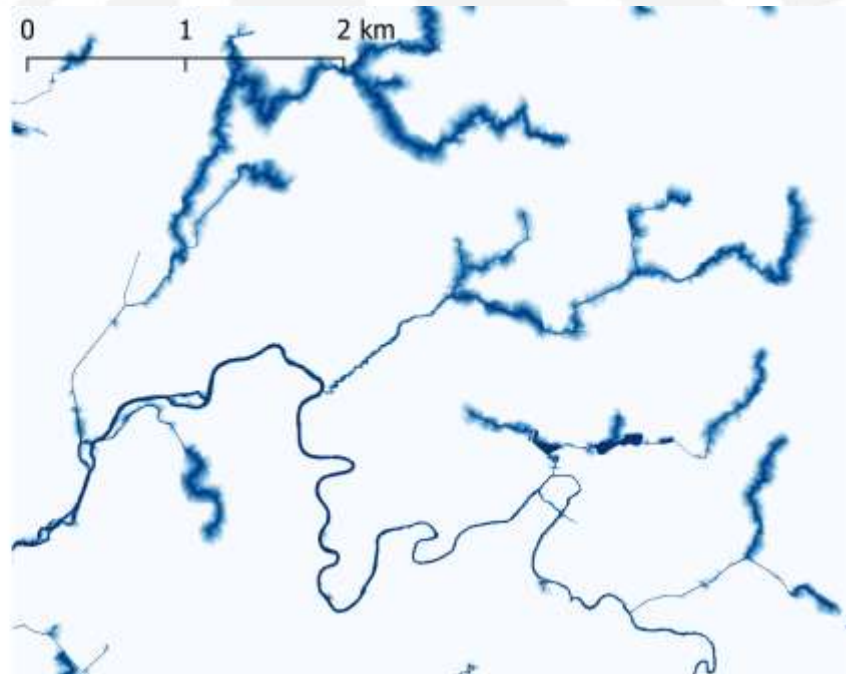


- Historical data about organic soil coverage in the Baltic states combined from various sources (historical soil data, bog/fen maps, forest types etc.);
- In total 2,36 million ha;
- Some of those soils nowadays are non existent.

## Wet area maps



## Depth to water maps

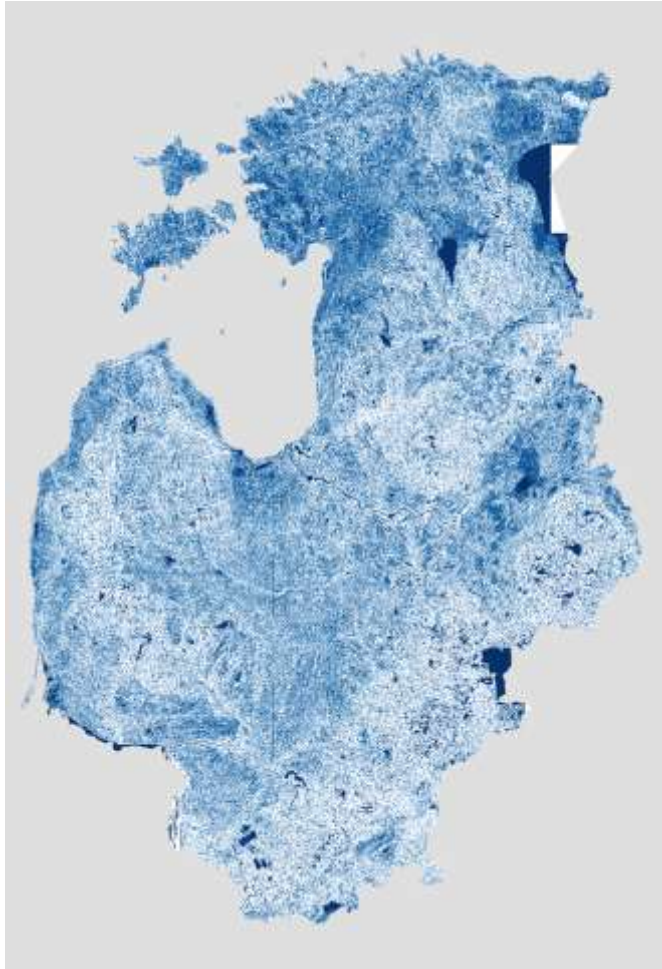


## Elevation data processing



- 102 tiles with elevation data in 5m horizontal resolution from ALS missions in Baltic states;
- Wet area maps will be finished in spring 2021.

## Depth to water maps



- Depth to water maps generated for whole area with catchment area thresholds 10 ha and 30 ha;
- Data published as WMS service and also downloadable from LSFRI Silava website.
- <http://www.silava.lv/172/view.aspx>

Thank you!  
Questions?



[www.orgbalt.eu](http://www.orgbalt.eu)



@orgbalt



@orgbalt




LIFE OrgBalt



orgbalt



orgbalt

The project "Demonstration of climate change mitigation potential of nutrients rich organic soils in Baltic States and Finland" (LIFE OrgBalt, LIFE18 CCM/LV/001158) has received funding from the LIFE Programme of the European Union and the State Regional Development Agency of Latvia.  [www.orgbalt.eu](http://www.orgbalt.eu)

The information reflects only the LIFE OrgBalt project beneficiaries' view and the European Commission's Executive Agency for Small and Medium-sized Enterprises is not responsible for any use that may be made of the information contained therein.