

# Peatland Agency Mecklenburg-Vorpommern

## Supporting the rewetting and climate-friendly use of organic soils

Dr. Almut Mrotzek

MoorAgentur MV

in Greifswald

<https://www.lgm.de/natur-und-klimaschutz/MoorAgentur-MV>

contact: [Mooragentur.mv@lgm.de](mailto:Mooragentur.mv@lgm.de)



Gefördert durch:

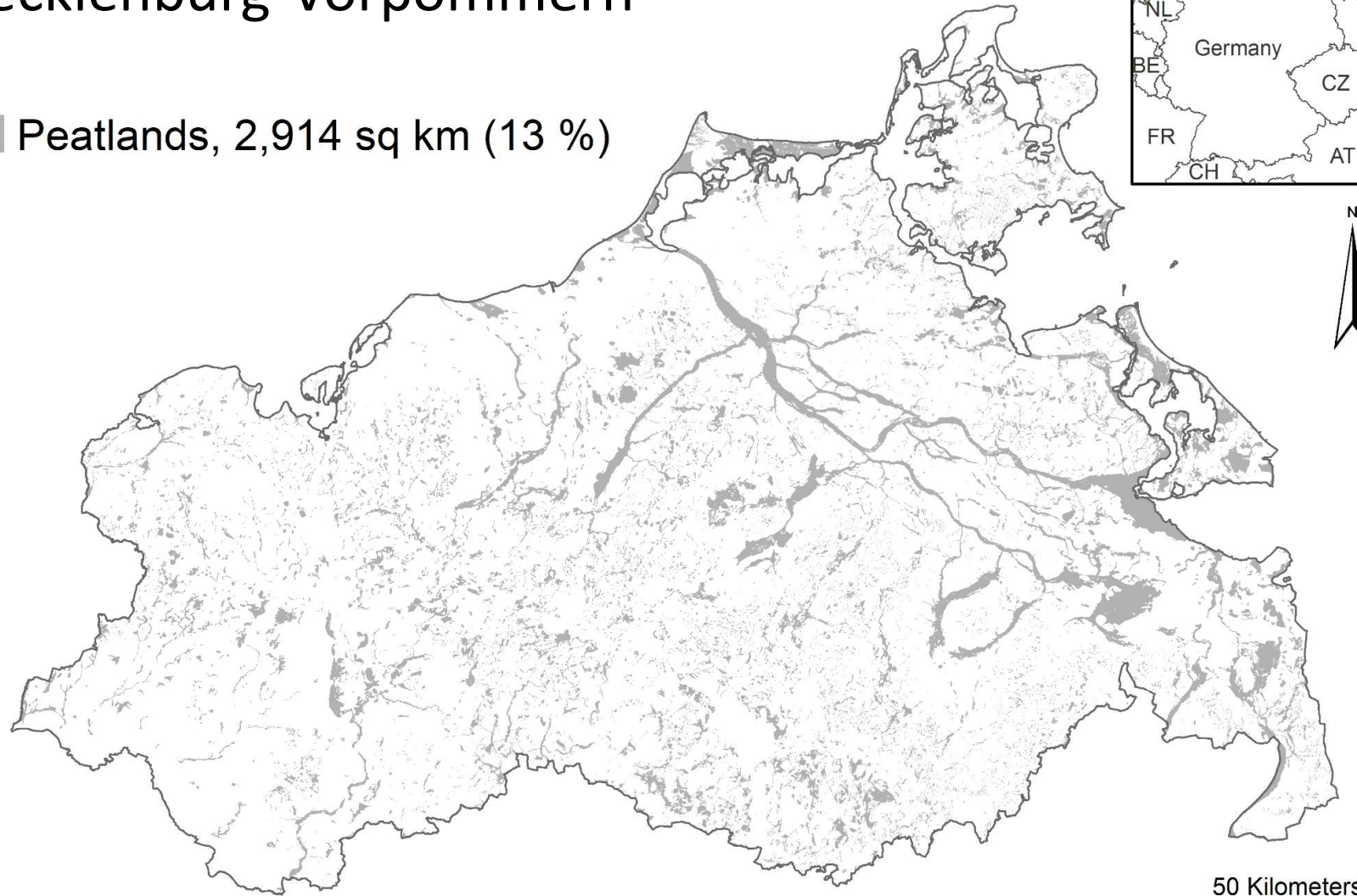


Bundesministerium  
für Umwelt, Naturschutz, nukleare Sicherheit  
und Verbraucherschutz

aufgrund eines Beschlusses  
des Deutschen Bundestages

# Mecklenburg-Vorpommern

■ Peatlands, 2,914 sq km (13 %)



- fens in river valleys
- other fenlands
- coastal mires
- (bogs)

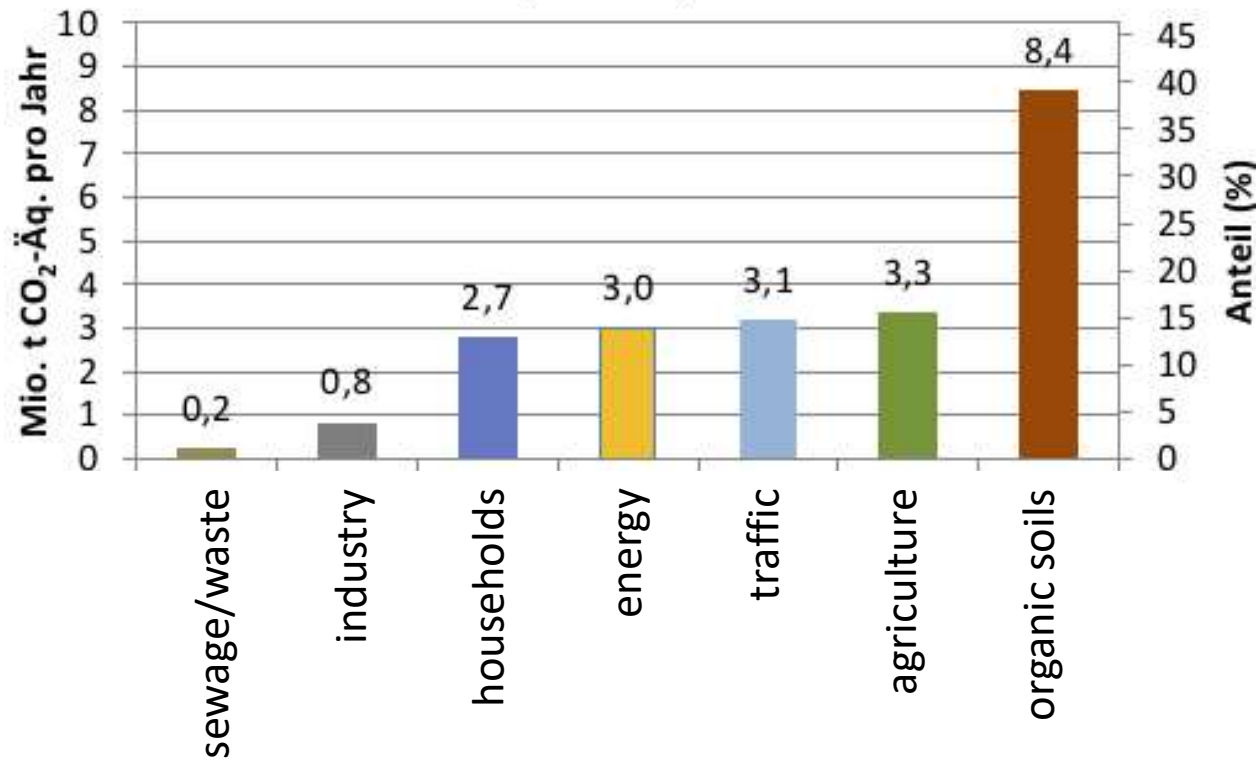
31.000 ha rewetted

200.000 ha grassland  
half of all grassland

35.000 ha arable land

# Mecklenburg-Vorpommern

THG-Emissionen Mecklenburg-Vorpommern  
(EM M-V)



Climate neutrality 2040

→ Peatland rewetting

# Mecklenburg-Vorpommern

- Rewetting processes involve a diversity of people and institutions:
  - land owners, land users
  - communities and counties
  - water bodies management (incl. Water Framework Directive)
  - nature conservation (incl. Natura 2000)
  - land management, exchange, market
- Permits and authorisation – planning and implementation
- Idea for a service centre, to support people interested in rewetting and wet use of peatland

# PaludiMV

- 10 yrs pilot project
  - aim to install several 100 ha paludiculture fields in 2 polder areas
  - production of paludi-biomass
  - develop production chains

funded by the German Ministry for Environment, Nature Conservation, Nuclear Safety and Consumer protection

- Department for **Soil Protection**

- including 2 yrs funding

“Establishment of the first specialised authority for peatland protection at federal state level”

Gefördert durch:



Bundesministerium  
für Umwelt, Naturschutz, nukleare Sicherheit  
und Verbraucherschutz

aufgrund eines Beschlusses  
des Deutschen Bundestages

# MoorAgentur MV – Start in Jan 2024

- Supporting and promoting peatland protection
- Pooling knowledge and information and making it available
- Testing an organisational model - transfer to other federal states

Funding: mostly staff

PR-work

finances for planning services for clients

Gefördert durch:



aufgrund eines Beschlusses  
des Deutschen Bundestages

# MoorAgentur MV



Company since 1991 (historical company before Second World War)

- managing land property of the federal state
- promoting improvement of agricultural structures and regional development
- partner for the public sector, farmers, local authorities and entrepreneurs

# Our Team

## Co-Leadership

*Katharina Burmeister:*

Environmental consultant - project planning, management and implementation

*Dr. Almut Mrotzek:*

Landscape ecologist - peatland research at Greifswald University (GMC)

*Lena Isenberg:*

PR-coordinator and assistant  
Communication management





# Subject-related staff members:

## from different departments of Landgesellschaft MV:

- **Peatland protection and compensation**  
2 persons (PaludiMV-Project)
- **Agrarcultural structure promotion**  
5 persons at 4 locations in MV
- **Urban and regional development**  
1 person
- **Flurneuordnung** - Land reparcelling/reorganisation  
as required
- **Grundstücksverkehr** - Real estate transactions  
as required

# MoorAgentur MV



Internal and external coordination

## Promoting acceptance

Initial counselling  
Networking  
Exchange  
Public relations

→ potential  
stakeholders

## Project initiation

Support with  
financing, planning,  
authorisation,  
implementation,  
monitoring

→ existing and new  
project holder

## Wet use/paludiculture

Knowledge transfer,  
development of  
utilisation chains and  
marketing structures

→ farmers,  
companies

# MoorAgentur MV

## Internal and external coordination



### Promoting acceptance

Initial counselling  
Networking  
Exchange  
Public relations

→ potential  
stakeholders

### Project initiation

Support with  
financing, planning,  
authorisation,  
implementation,  
monitoring

→ existing and new  
project holder

### Wet use/paludiculture

Knowledge transfer,  
development of  
utilisation chains and  
marketing structures

→ farmers,  
companies

# Communication objectives

- Creating acceptance within the groups of people are dealing with peatlands
  - especially land users and owners (not necessarily aimed at the general public)
    - Acceptance for wet peatland management - paludiculture
    - Acceptance for peatland protection as an important climate protection measure
- Informing about soil protection, climate protection, biodiversity protection, flood protection (also resulting in acceptance)
- Networking with various stakeholders and organisations

# Target groups and cooperation partners

- farmers (and farmers' associations)
- private land owners
- other land owners
  - State, federal state, cities and communities, churches, foundations, universities
- Water and soil associations
- Peatland and climate commissioner in municipalities
- other peatland organisations (e.g. Greifswald Mire Centre, agencies in other federal states)

# Public relations

- Website of MoorAgentur MV in progress
- Creation of communication concepts for specific target groups
- Print materials, social media, press work
- Networking with various stakeholders
- Planning of events: Trade fairs, field days
- Internal workshops on peatland topics within the Landgesellschaft



begleiten | unterstützen | vernetzen

# MoorAgentur MV

## Internal and external coordination

### Promoting acceptance

Initial counselling  
Networking  
Exchange  
Public relations

→ potential  
stakeholders



### Project initiation

Support with  
financing, planning,  
authorisation,  
implementation,  
monitoring

→ existing and new  
project holder

### Wet use/paludiculture

Knowledge transfer,  
development of  
utilisation chains and  
marketing structures

→ farmers,  
companies

# Project initiation

- Registration of existing inquiries(24)
- Initial discussions with:
  - Land owners
  - Water and soil associations
  - Project organisers
  - Planners
  - Farmers' association,...
- Preparatory planning:
  - funding for 8 preliminary plannings
  - funding for 4 authorisation plannings
- Making land available



# MoorAgentur MV

## Internal and external coordination

### Promoting acceptance

Initial counselling  
Networking  
Exchange  
Public relations

→ potential  
stakeholders

### Project initiation

Support with  
financing, planning,  
authorisation,  
implementation,  
monitoring

→ existing and new  
project holder



### Wet use/paludiculture

Knowledge transfer,  
development of  
utilisation chains and  
marketing structures

→ farmers,  
companies

# Obstacles to realisation

## **Obstacles to the realisation of peatland protection projects**

- Land availability
- Planning and procedure
- Conflicting objectives
- Financing
- Capacities and specialised knowledge

# Thank you!



# Kontakt: MoorAgentur MV

E-Mail: [Mooragentur.mv@lgmv.de](mailto:Mooragentur.mv@lgmv.de)

Telefon: +49 (3834) 832 -15

Landgesellschaft Mecklenburg Vorpommern

Walther-Rathenau-Straße 8a

17489 Greifswald

Webseite:

<https://www.lgmv.de/natur-und-klimaschutz/MoorAgentur-MV/>